

# We turn your data into business know-how

Successful medium and large enterprises need to react swiftly to today's fast paced business environment, where making business decisions based upon accurate and refined information means 'getting it right', first time.

For most organisations, the biggest challenge is integrating operational data from all along the supply chain, internally and externally, so that they are able to retrieve, process, analyse, report, and act upon critical, timely business data from all events and transactions, across functions, departments and organisations.

Our Business Intelligence platform simplifies this. The Pentaho BI Platform is an enterprise-class Business Intelligence (BI) platform that supports end-user reporting, analysis, and dashboard capabilities with back-end security, integration, scheduling, and workflow capabilities.

Capabilities and Benefits include:

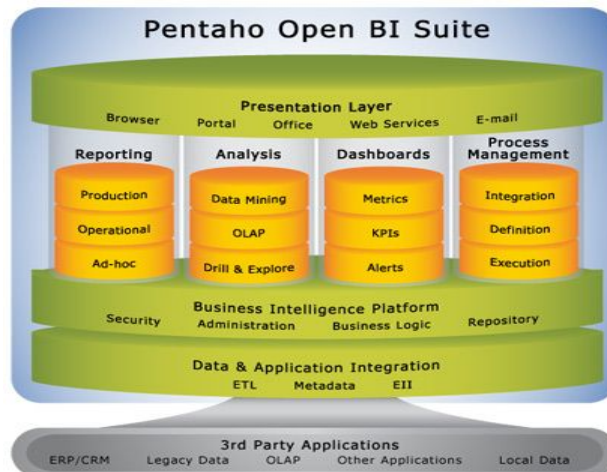
- Broad platform support based on Java standards
- Management and distribution of reports, analysis, and dashboards on an open source platform
- Easy integration with data sources, portals, and applications using open standards.
- Integrated scheduling and authentication
- Embedded workflow to allow for intelligence BI processes, and integration with external business processes
- Extensive customization capabilities using APIs, web services, or modification of templates, business rules, or even source code
- Integrated audit logging to track user activity, performance, and content access
- Improved data accuracy and integrity.
- Improved sharing of information and collaboration.
- Workflow-based processes enable you to implement unique business logic for a sustained competitive advantage

## Comprehensive BI capabilities

Our BI Platform supports, integrates, and enables a full spectrum of end user capabilities, including:

- Reporting
- Analysis
- Dashboards and Scorecards
- Data Mining
- Workflows
- Portal and office integration
- BI Platform

*We'll change the way your company uses information*

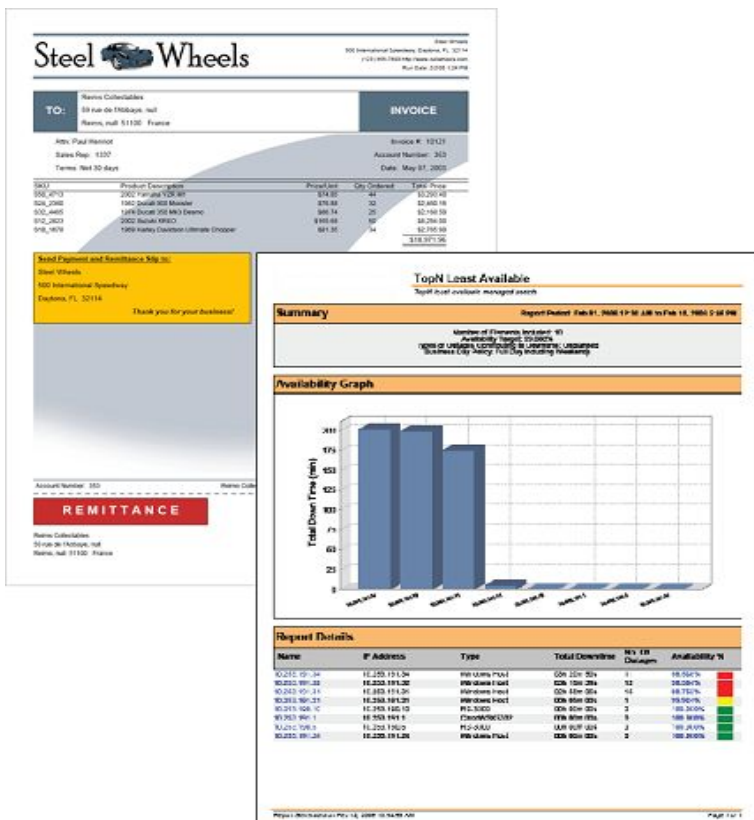


## How ARE YOU DOING, REALLY?

Business operations generate large amounts of data from systems like accounting, sales, and manufacturing. Additional data resides on PCs as spreadsheets, mailing lists, and other databases. Data lives in different locations, and in different formats. As a result, management has access to only a small fraction of all the information available in the company.

In addition, the data collected by operational systems is optimized for processing transactions, not for data analysis. This is the main reason it is difficult to quickly create reports from those systems.

Our solutions help overcome this.



# BUSINESS INTELLIGENCE REPORTING.

Our BI tools put the power of reporting in your hands. Most information systems fail to provide users with valuable reports that make business sense, Pentaho Reporting allows organisations to easily access, format, and distribute information to employees, customers, and partners.

- We provide flexible deployment from standalone desktop reporting, to interactive web-based reporting to enterprise business intelligence.
- The reporting module supports a broad data source support including relational, OLAP, or XML-based data sources
- Flexible report output options include Adobe PDF, HTML, Microsoft Excel, Rich Text Format, Open Document, or plain text
- Wizard-driven report design for fast, easy report creation
- *Professional Edition available with additional deployment capabilities including clustering, subscriptions, directory integration, version control, auditing, and more*

## ANALYSIS.

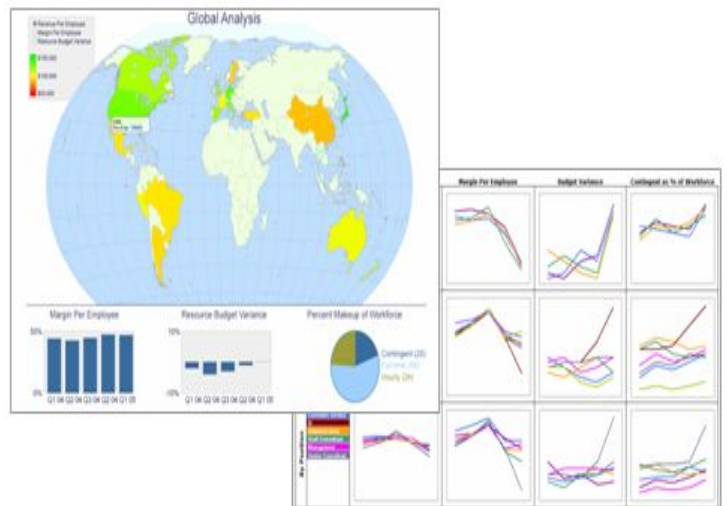
If your systems are telling you what, but not telling you why, then you need to see how our analysis tools can really help.

Pentaho Analysis puts rich, analytic power in the hands of your knowledge workers – helping them to operate with maximum effectiveness by gaining the insights and understanding they need to make optimal decisions. For example, if a report shows sales are trending lower than expected, knowledge workers need to be able to easily uncover the underlying issue by getting answers to questions such as

- Is the problem with one product line, or certain regions?
- What's different about that combination versus other combinations that don't have problems?
- Is there a related problem with sales headcount? Marketing campaigns? Or something else?

Pentaho Analysis helps answer these kinds of business questions by:

- Making it easy for knowledge workers to freely explore business information by dragging, dropping, drilling into, and cross-tabulating data.
- Providing speed-of-thought response times to complex analytical queries
- Offering advanced capabilities - such as integrated reporting, metadata, or dashboards through integration with other products in the Pentaho Open BI Suite

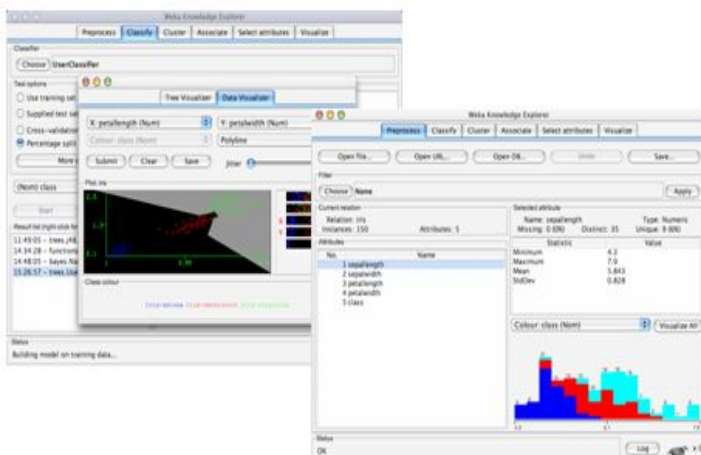


## WORKFLOW

Reports and graphs are fine on their own, but our tools go further than that. We have taken typical data management functions and combined them with workflows and business processes, so that your data is able to invoke the alerting of staff and the transfer of work when performance and monitoring scenarios become reality.

Our integrated workflow modules

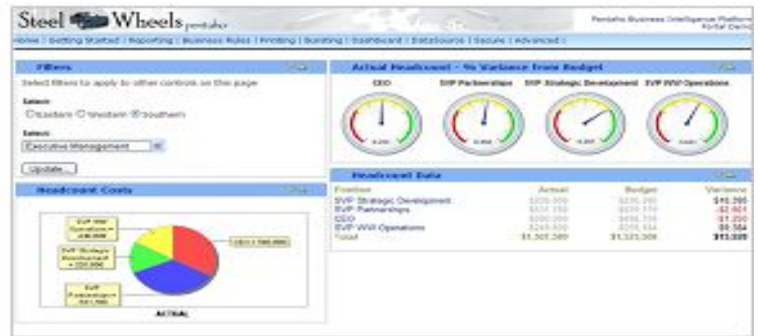
- Streamlines and automates business processes so they happen more efficiently, with guaranteed results, and can be reported on for compliance purposes.
- Directly links business performance metrics to the processes that drive them. Promotes a continuous cycle of business performance improvement – from reporting of metrics, through business change, to reporting on the results of that change, and repeating the process to optimize further



# DASHBOARDS

Pentaho Dashboards provide immediate insight into individual, departmental, or enterprise performance. By delivering key metrics in an attractive and intuitive visual interface, giving business users the critical information they need to understand and improve organizational performance. Pentaho Dashboards delivers this visibility by providing:

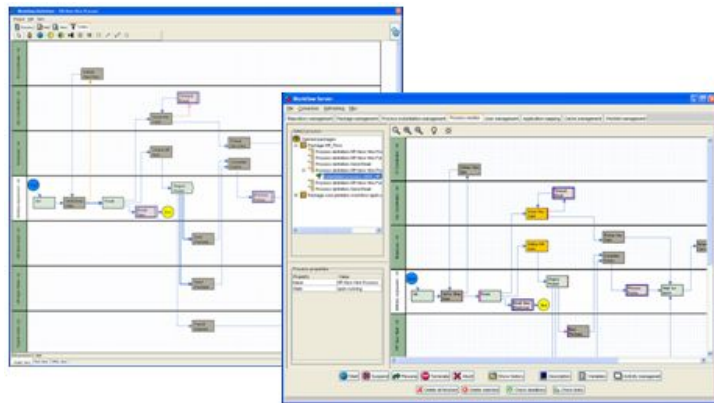
- Comprehensive metrics management capabilities which allow for the definition and tracking of critical metrics at the individual, department, or enterprise level
- Rich, interactive visual displays so that business users can immediately see which business metrics are on track, and which need attention
- Integration with Pentaho Reporting and Pentaho Analysis so that users can drill to underlying reports and analysis to understand what factors are contributing to good or bad performance
- Portal integration to make it easy to deliver relevant business metrics to large numbers of users, seamlessly integrated into their application



# DATA MINING

Data mining helps you find previously unknown patterns hidden in data and use the discovered information to predict future behaviour. Our data mining solutions help your organisations to :

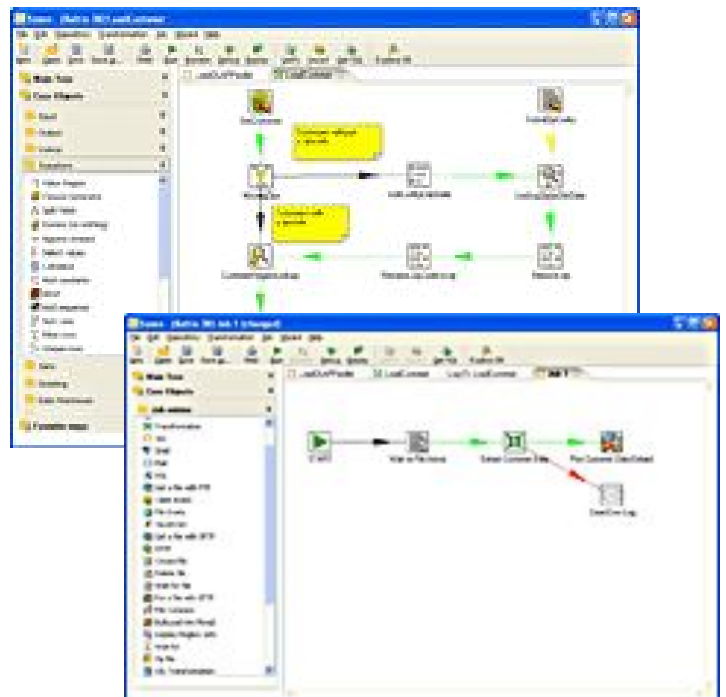
- Uncovers hidden relationships in your data which can be used to optimize business processes and predict future results.
- Provides a full range of advanced data mining algorithms.
- Enables results to be displayed to users in an easy-to-understand format.



# DATA INTEGRATION

Many organizations have valuable information scattered across disparate applications and databases. Often it's hard, if not impossible, for business users to get a clear view into customer service, sales performance, internal efficiency, or global performance without an integrated view of information across these data silos. Our Data Integration tools unlocks, cleanses and integrates this valuable information and puts it in the hands of your business users.

- Access and integrate disparate data
  - ERP and CRM applications
  - Legacy systems
  - Databases
- Scale up to meet large data requirements
  - Sophisticated caching
  - Clustering
  - Optimized SQL
- Maximize administrator productivity
  - 100% metadata-driven
  - Rich graphical user interface
  - Wizards to streamline common tasks

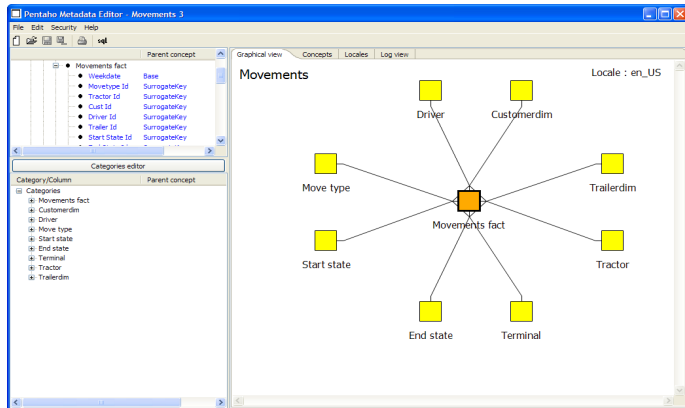


# METADATA

Database driven applications are often characterised by cryptic database tables. Columns and relationships. Our BI Platform includes a Metadata layer which is designed to make it easier for users to access information in business terms, by allowing administrators to :-

- present database information to business users in familiar business terms,
- create business-language definitions for complex or cryptic database tables and columns,
- set security parameters to limit data access to appropriate users,
- specify default formatting for data fields,
- provide additional translations for business terms for multi-lingual deployments.

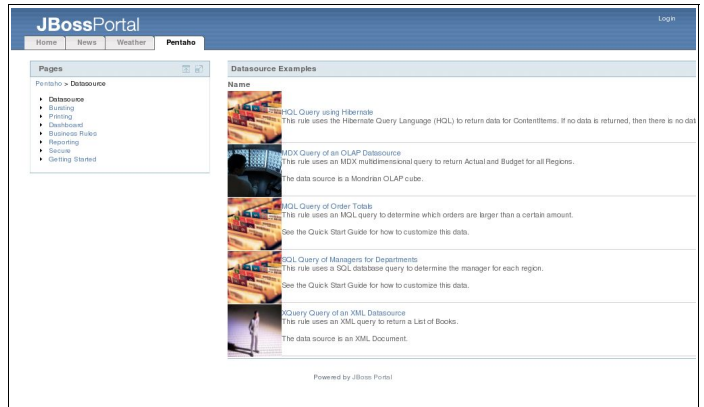
The Metadata layer includes the Metadata Editor, which allows you to design your metadata model using an easy to use graphical tool.



# PORTALS

Integration is an important part of our BI platform. We therefore include the ability to create portlets that are compliant to the JSR-168 standard, which means that it will integrate with your favourite portal. You can therefore expose the dashboard, analysis and charting functionality to your entire organisations, or customer base, if you wish..

The platform comes complete with the leading Jboss portal, but can be deployed in many other portals and application servers.



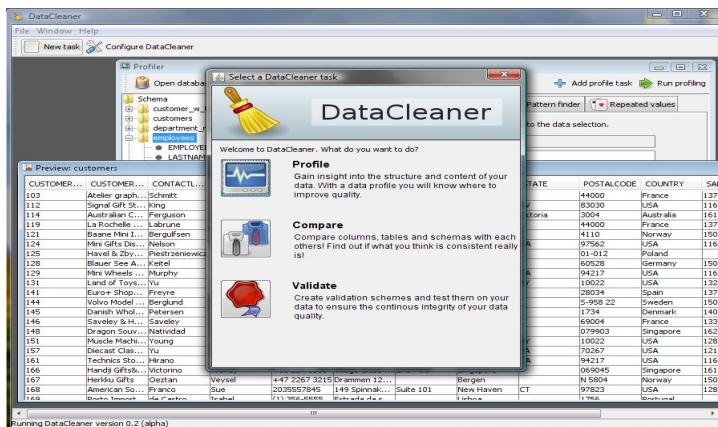
# CUSTOMISABILITY

Using solutions where a key area of focus is open standards and interoperability means you can deploy highly customised solutions to suit your requirements, not dictate it. This strategy allows you to deploy your business intelligence solution alongside your operations, not replace.

The BI platform comes with a complete developer library to allow you to extend the system, or integrate it into your current system.

# DATA CLEANING

Our business intelligence suite includes solutions for business and organisations wishing to measure and increase the quality of the data. The DataCleaner system includes functionality to profile and compare data, to validate data against business rules and to monitor the progression of these measurements over time. To do this, we provide you with a standalone desktop application for exploring and defining the data quality effort, and a web application for continuous data quality deployments.



# A COMPLETE TOOLSET

We provide you with a suite of tools focused on three levels within your organisation.

- We provide tools aimed at the end user, integrated into the data layer so that your complex operational data structures are presented as business concepts. Users are able to perform ad-hoc analysis of data and design and draw report at any time., subscribe and perform report bursting, and monitor and be alerted about business performance in real time
- We provide critical services for administrators, allowing integration with external business logic., definition and execution of business rules., and content presentation tools.
- We provide a complete API for system developers.

We can help you turn your data into business know-how, Contact us today.



P. O. Box 200, Sunninghill,  
2157, South Africa  
Tel : +27 11 468 4045  
[info@datacraft.co.za](mailto:info@datacraft.co.za)  
<http://www.datacraft.co.za>